



**Non-Spec Products for Light Commercial
and Design-Build Projects**

Roof Drains

Floor Drains

Sanitary Floor Sinks

Cleanouts

Water Hammer Arresters

Interceptors

and More...

Roof Drains and Accessories

100 Series

Ordering Guidelines

Example: Figure No. _____ 148 - Y02
Type of Outlet _____
Pipe Size (Inches) _____

Dome Only Ordering Guidelines

148-10 - 6" High Cast Iron Dome

Outlet Types

Y No-Hub

Pipe Sizes (Inches)

02 - 2"

03 - 3"

04 - 4"

ROOF DRAINS AND ACCESSORIES

100 Series

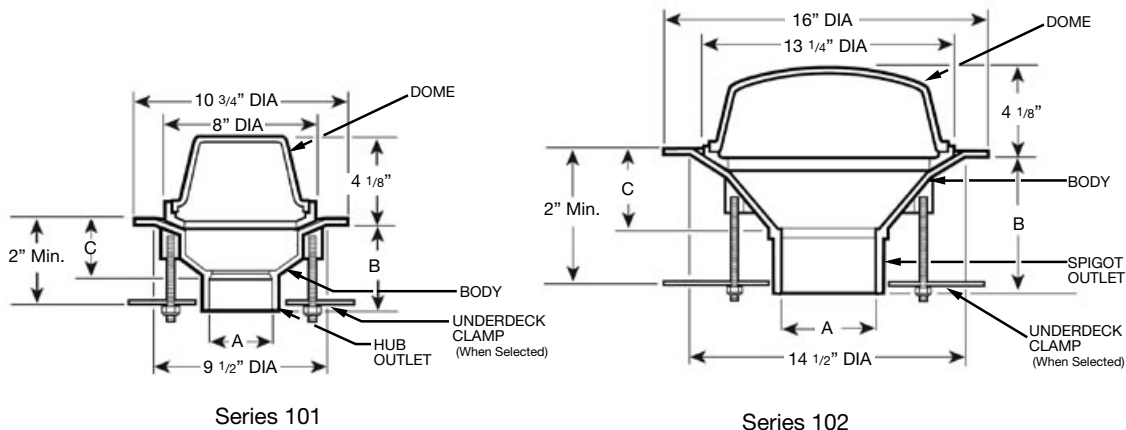
PVC Roof Drain, Series 101 and 102

TAG _____

Product Description: Recommended for roof drainage systems. This PVC roof drain has excellent weathering characteristics; it will resist rust and corrosion. The body of the PVC roof drain is inert to all roof deck and roofing materials. The roof drain consists of a large sump, a combined flashing collar and gravel stop, and dome.

Features and Benefits:

- Corrosion and weather resistant for years of service
- Light weight facilitates transportation, handling, and installation
- Rugged design resists abuse during installation and while in service
- Easily adapted to all DWV systems for 2" through 8" nominal pipe sizes, using approved adapters (furnished by others)
- Regularly Furnished: dome with debris guard slots, body with threaded inserts, combined flashing collar and gravel stop, seepage openings, and pre-drilled holes for dome securing screws
- IAPMO Listed, File No. 3854



Series Number	Material Type	Description	A Outlet Size	B	C	Outlet Type
101-H02	PVC	Roof Drain with Dome	2"	3 7/8"	2 5/8"	Hub
101-H03	PVC	Roof Drain with Dome	3"	4 1/2"	2 5/8"	Hub
101-H04	PVC	Roof Drain with Dome	4"	4 3/4"	2 5/8"	Hub
101-10	PVC	Flashing Collar for 2", 3" & 4" RD	-	-	-	-
101-11	PVC	Dome for 2", 3" & 4" RD	-	-	-	-
101-12	Steel	Under Deck Clamp for 2", 3" & 4" RD	-	-	-	-
102-S06	PVC	Roof Drain with ABS Dome	6"	4 13/32"	3 1/2"	Spigot
102-S08	PVC	Roof Drain with ABS Dome	8"	4 13/32"	2 3/4"	Spigot
102-10	PVC	Flashing Collar for 6" & 8" RD	-	-	-	-
102-11	ABS	Dome for 6" & 8" RD	-	-	-	-
102-12	Steel	Under Deck Clamp for 6" & 8" RD				

NOTE: Dimensional data is subject to manufacturing tolerances and change without notice.

ROOF DRAINS AND ACCESSORIES

100 Series

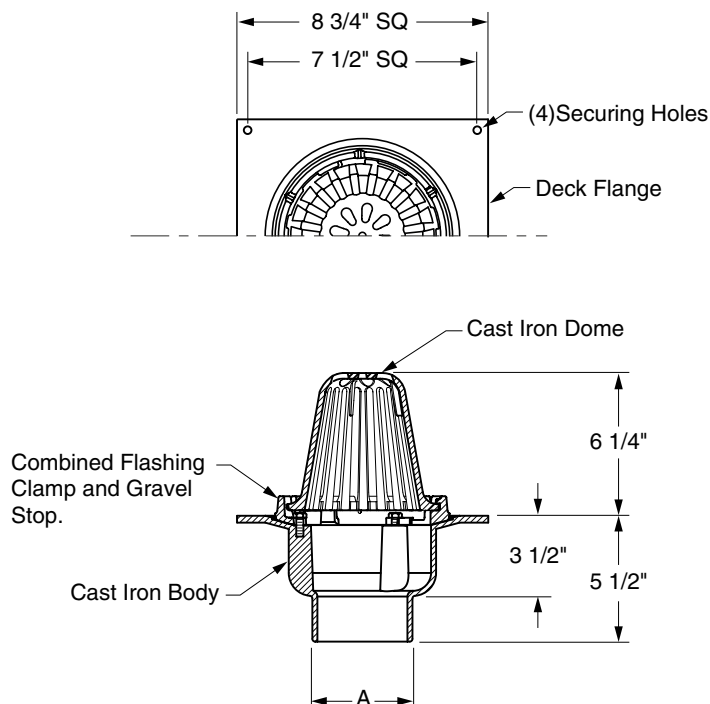
Small Area Roof Drain, Series 110

TAG _____

Product Description: This small area roof drain is recommended for use on flat roof installation. The roof drain is regularly furnished with a cast iron body, combination flashing clamp and gravel stop, and 6" high cast iron dome.

Features and Benefits:

- Used on flat roof applications
- Roof drain body, combination flashing clamp and gravel stop, and dome are all cast iron
- Regularly furnished with 6" high cast iron dome
- All components are coated to protect against corrosion



Series 110

Series Number	Description	Outlet Size "A"	Outlet Type
<input type="checkbox"/> 110-Y02	Cast Iron Roof Drain	2"	No-Hub
<input type="checkbox"/> 110-Y03	Cast Iron Roof Drain	3"	No-Hub
<input type="checkbox"/> 110-Y04	Cast Iron Roof Drain	4"	No-Hub

NOTE: Dimensional data is subject to manufacturing tolerances and change without notice.



Built by:
JAY R. SMITH MFG. CO.
DIVISION OF SMITH INDUSTRIES, INC.

Series 110
SPM 1013
11/05

ROOF DRAINS AND ACCESSORIES

100 Series

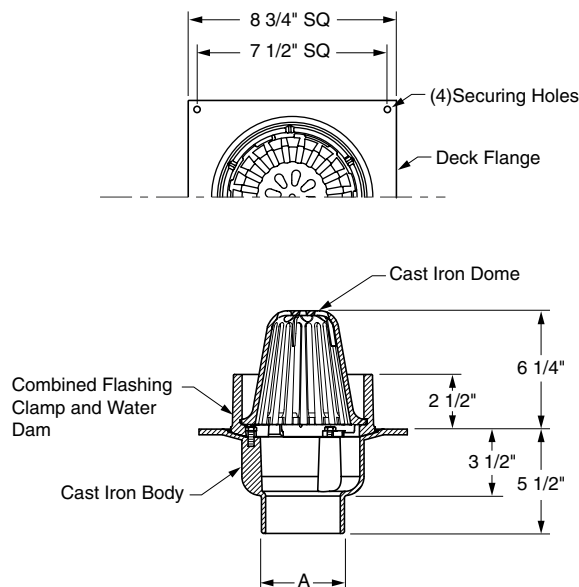
TAG _____

Small Area Overflow Roof Drain, Series 111

Product Description: This cast iron small area overflow roof drain is recommended for use on flat roof installation. It is used as an emergency overflow drain for conventional roofs, draining water when the depth of the water on the roof reaches the water dam height.

Features and Benefits:

- Used on flat roof applications
- Roof drain body, combination flashing clamp and water dam, and dome are all cast iron
- Regularly furnished with 6" high cast iron dome
- All components are coated to protect against corrosion



Series 111

Series Number	Description	Outlet Size "A"	Outlet Type
<input type="checkbox"/> 111-Y02	Cast Iron Roof Drain	2"	No-Hub
<input type="checkbox"/> 111-Y03	Cast Iron Roof Drain	3"	No-Hub
<input type="checkbox"/> 111-Y04	Cast Iron Roof Drain	4"	No-Hub
<input type="checkbox"/> 111-10	6" High Cast Iron Dome		

NOTE: Dimensional data is subject to manufacturing tolerances and change without notice.



Built by:
JAY R. SMITH MFG. CO.
DIVISION OF SMITH INDUSTRIES, INC.

Series 111
SPM 1013
11/05

ROOF DRAINS AND ACCESSORIES

100 Series

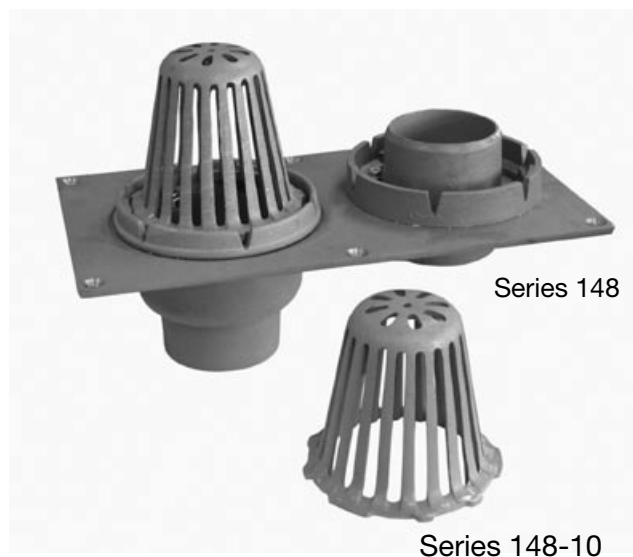
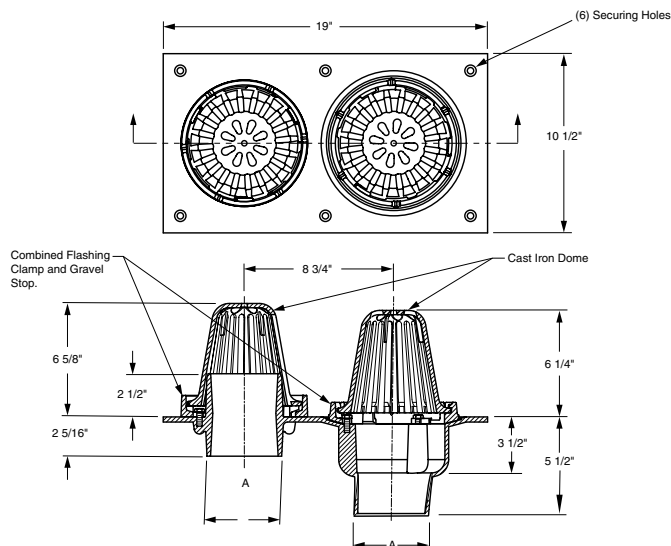
TAG _____

Combination Roof and Overflow Drain, Series 148

Product Description: Recommended for use on flat roofs where the roof drain assembly serves as a conventional roof drain and overflow for emergency use. The combination roof and overflow drain consists of a cast iron roof and overflow drain with no-hub outlets, two cast iron combination flashing clamps and gravel stops, and one 6" high cast iron dome. All components are coated to protect against corrosion.

Features and Benefits:

- Use on flat roofs where emergency overflow can be used in combination with roof drain
- All components are coated to protect against corrosion
- Roof drain, overflow drain, flashing clamps, gravel stop, and dome are all cast iron
- Regularly furnished with 6" cast iron dome, an additional 6" dome is available for overflow drain



Series Number	Description	Outlet Size-"A"	Outlet Type
<input type="checkbox"/> 148-Y02	Roof & Overflow Drain with One CI Dome	2"	No-Hub
<input type="checkbox"/> 148-Y03	Roof & Overflow Drain with One CI Dome	3"	No-Hub
<input type="checkbox"/> 148-Y04	Roof & Overflow Drain with One CI Dome	4"	No-Hub
<input type="checkbox"/> 148-10	6" High Cast Iron Dome, optional for overflow		

NOTE: Dimensional data is subject to manufacturing tolerances and change without notice.

Floor Drains and Accessories

200 Series

(Body and Strainer Ordered Separately)

Ordering Guidelines

Example: Figure No. _____
 Type of Outlet _____
 Pipe Size (Inches) _____

210 - Y02

Strainer Ordering Guidelines

- 210-10 - 5 3/4" Diameter Cast Iron Strainer (Light Duty)
- 210-11 - 5 3/4" Diameter Cast Iron w/Ductile Grate (Medium Duty)
- 210-12 - 5" Diameter Nickel Bronze Strainer (Light Duty)
- 210-13 - 5" Square Nickel Bronze Strainer (Light Duty)
- 210-14 - 6" Diameter Nickel Bronze Strainer (Light Duty)
- 210-15 - 6" Square Nickel Bronze Strainer (Light Duty)

Outlet Types

- L Speedi-Set for Service Weight or No-Hub Cast Iron Pipe
- LXH Speedi-Set for Extra Heavy Weight Cast Iron or PVC Pipe
- T Threaded (201 Series only)
- Y No-Hub

Pipe Sizes (Inches)

- 02 - 2"
- 03 - 3"
- 04 - 4"

FLOOR DRAINS AND ACCESSORIES

200 Series

TAG _____

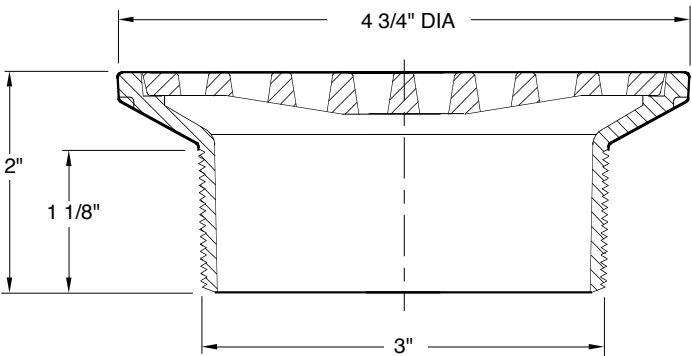
Nickel Bronze Adjustable Strainer Head, Series 201

Product Description:


Round nickel bronze strainer head with secured grate

Features and Benefits:

- 3” NPT tapered thread shank
- Heel proof openings



Series 201-T03

Series Number	Description	Top Size	Pipe Size
 201-T03	Round Nickel Bronze Strainer (Light Duty)	4-3/4"	3"

NOTE: Dimensional data is subject to manufacturing tolerances and change without notice.

FLOOR DRAINS AND ACCESSORIES

200 Series

TAG _____

Nickel Bronze Adjustable Strainer with PVC Body, Series 202

Product Description:

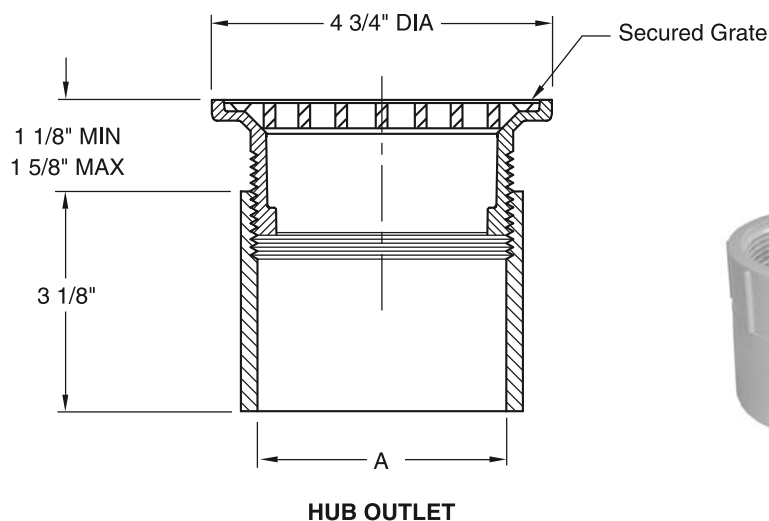
Round nickel bronze strainer head with secured grate and PVC body.

Features and Benefits; Adaptor:

- Schedule 40 PVC body with 3" Hub outlet
- 3" FIP Threads
- For on-grade installation

Features and Benefits; Strainer:

- 3" MIP Threaded Shank
- Heel Proof Openings
- Adjustable Nickel Bronze Strainer



Series Number	Description	Outlet Size-"A"	Outlet Type
<input type="checkbox"/> 202-H03	PVC Adjustable Floor Drain, Body Only	3"	Hub
Series Number	Available Strainer	Top Size	Pipe Size
<input type="checkbox"/> 201-T03	Adjustable Round Nickel Bronze Strainer	4 3/4"	3 " MIP Threaded Shank

NOTE: Dimensional data is subject to manufacturing tolerances and change without notice.



A Product of:
JAY R. SMITH MFG. CO.®
DIVISION OF SMITH INDUSTRIES, INC.

Series 202

SPM 1013
06/08

FLOOR DRAINS AND ACCESSORIES

200 Series

TAG _____

Adjustable PVC Floor Drain for Non-Membrane Floors, Series 209

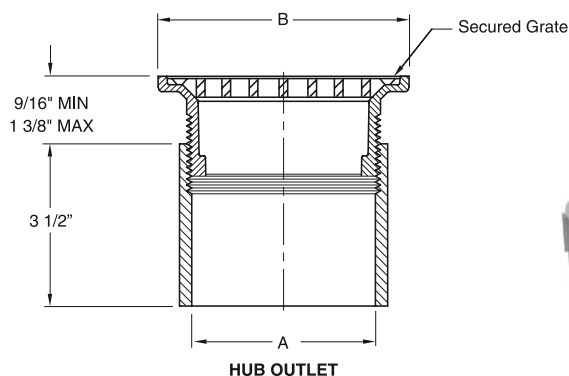
Product Description: Designed for use in non-membrane floor areas. Floor drain body is PVC and is available with a selection of adjustable tops.




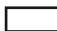

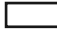

Features and Benefits, Body:

- Designed for non-membrane floors
- Schedule 40 PVC body with 4" Hub outlet
- 4" FIP Threads
- For on-grade installation

Features and Benefits, Tops:

- 5" and 6" round and square self-polishing, nickel bronze strainers with secured grates
- 5-3/4" round cast iron and cast iron with ductile iron grate
- 4" NPSM straight threaded shank on strainers



Series Number	Description	Outlet Size-"A"	Outlet Type
 209-H04	PVC Adjustable Floor Drain, Body Only	4"	Hub
Series Number	Available Strainers	Top Size-"B"	Pipe Size
 210-10	Adjustable Round Cast Iron Strainer Head (Light Duty)	5-3/4"	4" NPSM Straight Threaded Shank
 210-11	Adjustable Round CI Strainer w/Ductile Iron Grate (Medium Duty)	5-3/4"	4" NPSM Straight Threaded Shank
 210-12	Adjustable Round Nickel Bronze Strainer (Light Duty)	5"	4" NPSM Straight Threaded Shank
 210-13	Adjustable Square Nickel Bronze Strainer (Light Duty)	5"	4" NPSM Straight Threaded Shank
 210-14	Adjustable Round Nickel Bronze Strainer (Light Duty)	6"	4" NPSM Straight Threaded Shank
 210-15	Adjustable Square Nickel Bronze Strainer (Light Duty)	6"	4" NPSM Straight Threaded Shank

NOTE: Dimensional data is subject to manufacturing tolerances and change without notice.



A Product of:
JAY R. SMITH MFG. CO.®
DIVISION OF SMITH INDUSTRIES, INC.

Series 209
SPM 1013
06/08

FLOOR DRAINS AND ACCESSORIES

200 Series

TAG _____

Adjustable Floor Drain for Non-Membrane Floors, Series 210

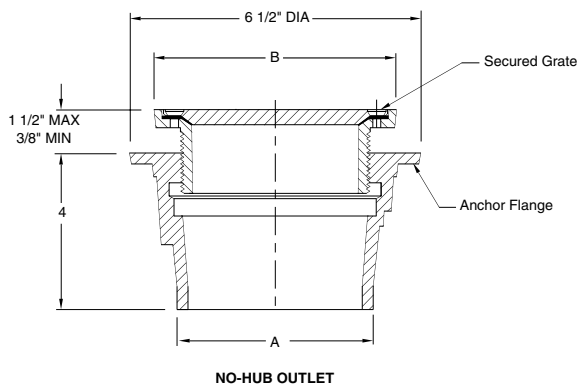
Product Description: Designed for use in non-membrane floor areas. Floor drain body is cast iron and is available with a selection of adjustable tops.

Features and Benefits, Body:

- Designed for non-membrane floors
- Cast iron body coated to protect against corrosion
- Push-on (service weight and extra heavy) and no-hub outlets available in 2", 3" and 4" pipe sizes
- 1/2" NPT trap primer connection

Features and Benefits, Tops:

- 5" and 6" round and square self-polishing, nickel bronze strainers with secured grates
- 5-3/4" round cast iron and cast iron with ductile iron strainers
- 4" NPSM straight threaded shank on strainers



Series Number	Description	Outlet Size-"A"	Outlet Type
<input type="checkbox"/> 210-L02	Adjustable Floor Drain, Body Only	2"	Push-On, Service Weight or No-Hub Cast Iron Pipe
<input type="checkbox"/> 210-L03	Adjustable Floor Drain, Body Only	3"	Push-On, Service Weight or No-Hub Cast Iron Pipe
<input type="checkbox"/> 210-L04	Adjustable Floor Drain, Body Only	4"	Push-On, Service Weight or No-Hub Cast Iron Pipe
<input type="checkbox"/> 210-LXH02	Adjustable Floor Drain, Body Only	2"	Push-On, Extra Heavy Weight Cast Iron or PVC Pipe
<input type="checkbox"/> 210-LXH03	Adjustable Floor Drain, Body Only	3"	Push-On, Extra Heavy Weight Cast Iron or PVC Pipe
<input type="checkbox"/> 210-LXH04	Adjustable Floor Drain, Body Only	4"	Push-On, Extra Heavy Weight Cast Iron or PVC Pipe
<input type="checkbox"/> 210-Y02	Adjustable Floor Drain, Body Only	2"	No-Hub
<input type="checkbox"/> 210-Y03	Adjustable Floor Drain, Body Only	3"	No-Hub
<input type="checkbox"/> 210-Y04	Adjustable Floor Drain, Body Only	4"	No-Hub
Series Number	Available Strainers	Top Size-"B"	Pipe Size
<input type="checkbox"/> 210-10	Adjustable Round Cast Iron Strainer Head (Light Duty)	5-3/4"	4" NPSM Straight Threaded Shank
<input type="checkbox"/> 210-11	Adjustable Round CI Strainer w/Ductile Iron Grate (Medium Duty)	5-3/4"	4" NPSM Straight Threaded Shank
<input type="checkbox"/> 210-12	Adjustable Round Nickel Bronze Strainer (Light Duty)	5"	4" NPSM Straight Threaded Shank
<input type="checkbox"/> 210-13	Adjustable Square Nickel Bronze Strainer (Light Duty)	5"	4" NPSM Straight Threaded Shank
<input type="checkbox"/> 210-14	Adjustable Round Nickel Bronze Strainer (Light Duty)	6"	4" NPSM Straight Threaded Shank
<input type="checkbox"/> 210-15	Adjustable Square Nickel Bronze Strainer (Light Duty)	6"	4" NPSM Straight Threaded Shank

NOTE: Dimensional data is subject to manufacturing tolerances and change without notice.



Built by:
JAY R. SMITH MFG. CO.
DIVISION OF SMITH INDUSTRIES, INC.

Series 210

SPM 1013
11/04

FLOOR DRAINS AND ACCESSORIES

200 Series

TAG _____

PVC and ABS Floor or Shower Drains with Adjustable Strainer Heads, Series 211 - 212

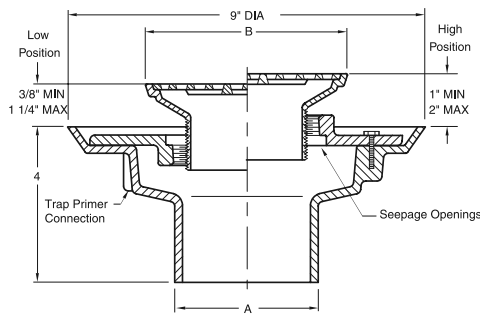
Product Description: Designed for use in showers, bathrooms, kitchens and other finished floor areas. Floor drain body is PVC or ABS and is available with a selection of adjustable tops.

Features and Benefits, Body:

- PVC or ABS body with cast iron flashing collar
- Cast iron flashing collar is reversible to allow adjustment of flashing collar with seepage openings
- Hub x Slip and hub outlets available in 2", 3" and 4" pipe sizes
- Full open throat and large sump area provide complete and thorough drainage
- 1/2" NPT trap primer connection

Features and Benefits, Tops:

- 5" and 6" round and square self-polishing, nickel bronze strainers with secured grates
- 5-3/4" round cast iron and cast iron with ductile iron grate
- 4" NPSM straight threaded shank on strainers



Series 211-212



Series 210-10



Series 210-12



Series 210-11



Series 210-13

Series Number	Description	Outlet Size-"A"	Outlet Type
<input type="checkbox"/> 211-H02x03	ABS Adjustable Floor Drain, Body Assembly Only	2" x 3"	Hub x Slip
<input type="checkbox"/> 211-H03x04	ABS Adjustable Floor Drain, Body Assembly Only	3" x 4"	Hub x Slip
<input type="checkbox"/> 211-H04	ABS Adjustable Floor Drain, Body Assembly Only	4"	Hub
<input type="checkbox"/> 212-H02x03	PVC Adjustable Floor Drain, Body Assembly Only	2" x 3"	Hub x Slip
<input type="checkbox"/> 212-H03x04	PVC Adjustable Floor Drain, Body Assembly Only	3" x 4"	Hub x Slip
<input type="checkbox"/> 212-H04	PVC Adjustable Floor Drain, Body Assembly Only	4"	Hub
Series Number	Available Strainers	Top Size-"B"	Pipe Size
<input type="checkbox"/> 210-10	Adjustable Round Cast Iron Strainer Head (Light Duty)	5-3/4"	4" NPSM Straight Threaded Shank
<input type="checkbox"/> 210-11	Adjustable Round CI Strainer w/Ductile Iron Grate (Medium Duty)	5-3/4"	4" NPSM Straight Threaded Shank
<input type="checkbox"/> 210-12	Adjustable Round Nickel Bronze Strainer (Light Duty)	5"	4" NPSM Straight Threaded Shank
<input type="checkbox"/> 210-13	Adjustable Square Nickel Bronze Strainer (Light Duty)	5"	4" NPSM Straight Threaded Shank
<input type="checkbox"/> 210-14	Adjustable Round Nickel Bronze Strainer (Light Duty)	6"	4" NPSM Straight Threaded Shank
<input type="checkbox"/> 210-15	Adjustable Square Nickel Bronze Strainer (Light Duty)	6"	4" NPSM Straight Threaded Shank

NOTE: Dimensional data is subject to manufacturing tolerances and change without notice.



A Product of:
JAY R. SMITH MFG. CO.®
DIVISION OF SMITH INDUSTRIES, INC.

Series 211 - 212

SPM 1013
06/08

FLOOR DRAINS AND ACCESSORIES

200 Series

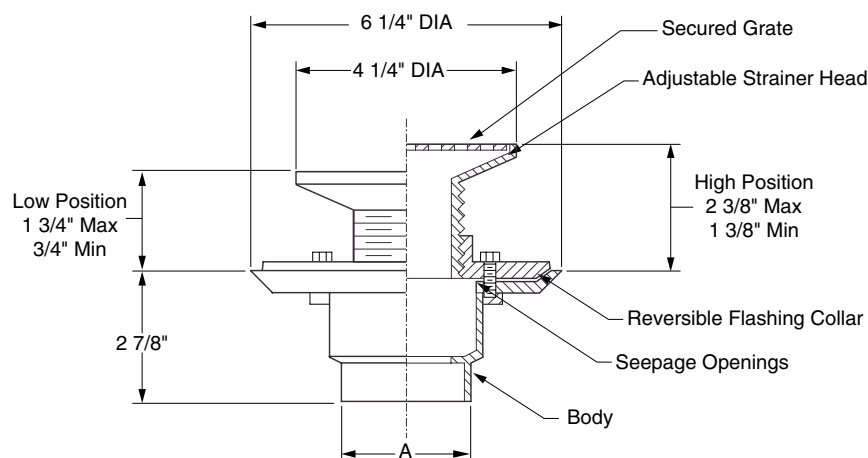
TAG _____

PVC and ABS Tiled Shower Drains, Series 215-216

Product Description: PVC or ABS tiled adjustable shower drain with stainless steel grate.

Features and Benefits:

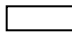
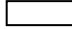
- Fits over 2" and inside 3" Sch 40 DWV pipe
- 4 1/4" round secured stainless steel grate with 2" threaded shank
- Adjustable strainer head to meet finish floor level
- Plastic rim allows easy grate replacement
- Clamp ring features keyhole slots for versatility and durability
- Threaded brass insert in body for clamping collar bolts
- Flashing collar with seepage openings
- Reversible flashing collar for high/low adjustment
- IAPMO listed



Series 215-216



Series 215

Series Number	Description	Outlet Size "A"	Outlet Type
 215-H02X03	ABS Shower Drain Body and Stainless Grate	2"x3"	Hub x Slip
 216-H02X03	PVC Shower Drain Body and Stainless Grate	2"x3"	Hub x Slip

Note: Dimensional data is subject to manufacturing tolerances and change without notice.



A Product of:
JAY R. SMITH MFG. CO.
DIVISION OF SMITH INDUSTRIES, INC.



Series 215-216

SPM 1013

6/06

FLOOR DRAINS AND ACCESSORIES

200 Series

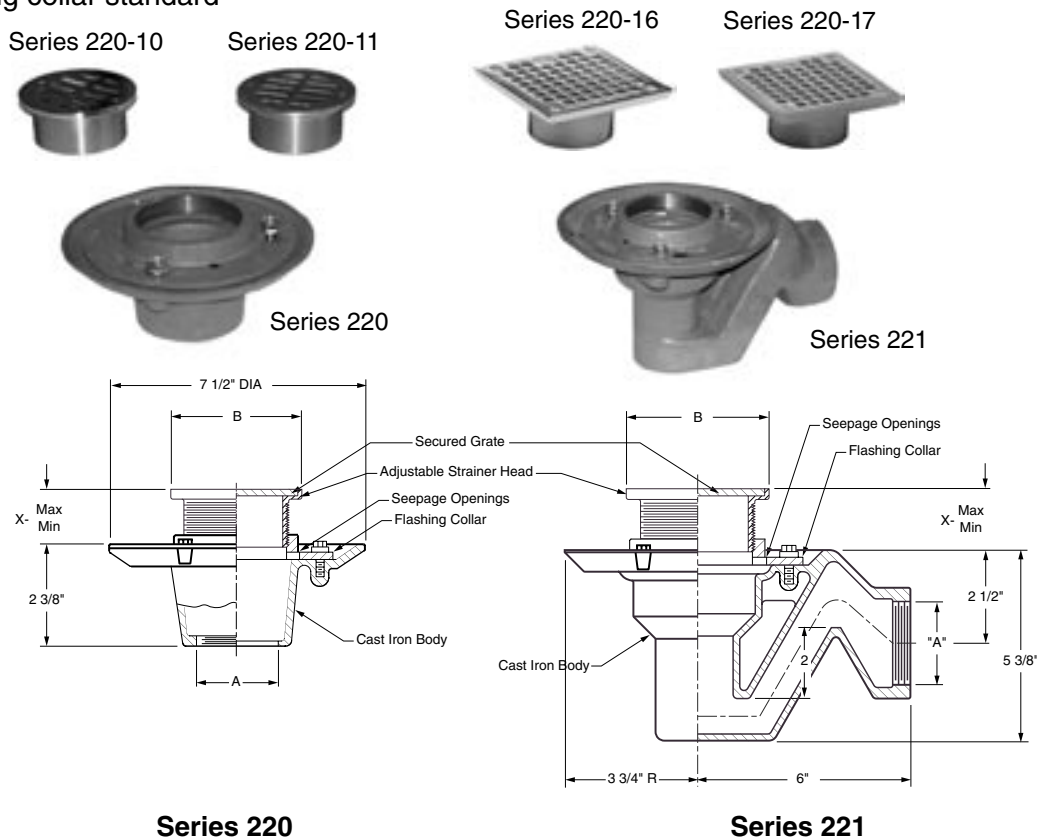
TAG _____

Shower Drain, Series 220 - 221

Product Description: Cast iron shower drain with adjustable strainer head.

Features and Benefits:

- Available with 4" round polished bronze or chrome plated top with 3" threaded shank
- Available with 5" square nickel bronze or chrome plated top with 3" threaded shank
- Cast iron body coated to protect against corrosion
- Available with bottom or side outlet bodies
- Side outlet body provided with integral trap
- 2" Threaded outlet available for both bottom or side outlet bodies
- 2" Caulk outlet available for bottom outlet body only
- Flashing collar standard



Series Number	Description	Outlet Size "A"		Outlet Type
<input type="checkbox"/> 220-C02	Shower Drain, Body Only	2"		Caulk
<input type="checkbox"/> 220-T02	Shower Drain, Body Only	2"		Threaded
<input type="checkbox"/> 221-T02	Shower Drain w/Trap, Body Only	2"		Threaded
Series Number	Description	Top Size "B"	X- Min. Max.	Pipe Size
<input type="checkbox"/> 220-10	Adjustable Round Chrome Plated Strainer	4"	1" - 1 7/8"	3" Threaded Shank
<input type="checkbox"/> 220-11	Adjustable Round Polished Bronze Strainer	4"	1" - 1 7/8"	3" Threaded Shank
<input type="checkbox"/> 220-16	Adjustable Square Chrome Plated Strainer	5"	1 3/8" - 2 1/4"	3" Threaded Shank
<input type="checkbox"/> 220-17	Adjustable Square Nickel Bronze Strainer	5"	1 3/8" - 2 1/4"	3" Threaded Shank

NOTE: Dimensional data is subject to manufacturing tolerances and change without notice.



Built by:
JAY R. SMITH MFG. CO.
DIVISION OF SMITH INDUSTRIES, INC.

Series 220 - 221

SPM 1013

6/06

FLOOR DRAINS AND ACCESSORIES

200 Series

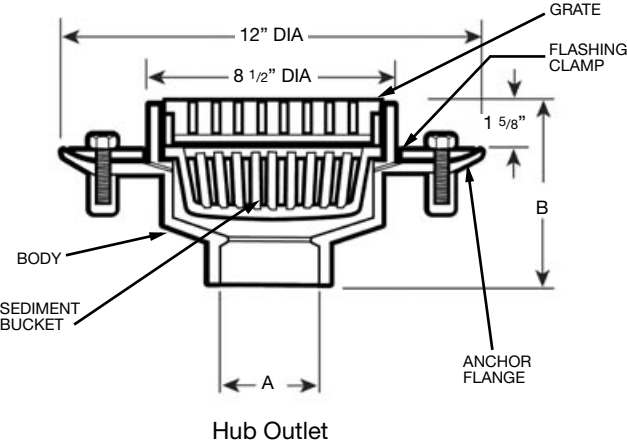
PVC Floor Drain, Series 225

TAG _____

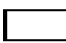
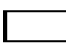
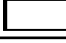
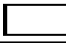
Product Description: Recommended for use in light traffic areas where a shallow drain is required. This floor drain is produced from high strength, chemically resistant PVC; ensuring it is tough, durable and capable of withstanding job site abuse. The floor drain consists of an 8" diameter grate, body, seepage holes, sediment bucket, flange and flashing clamp. In on-grade applications the flange acts as an anchor. When installed in waterproof floors, the flashing clamp is used for clamping of membrane.

Features and Benefits:

- PVC offers excellent resistance to chemicals, will not chip, rust or corrode
- Light weight facilitates transportation, handling, and installation
- Can be adapted to all types of floor construction and finishes
- Medium duty load rating
- IAPMO Listed, File No. 3978



Series 225

Series Number	Material Type	Description	A Outlet Size	B	Outlet Type
 225-H03	PVC	Floor Drain Body, Grate, and Sediment Bucket	3"	5 13/16"	Hub
 225-H04	PVC	Floor Drain Body, Grate, and Sediment Bucket	4"	6 1/16"	Hub
 225-10	PVC	Grate	-	-	-
 225-11	PVC	Sediment Bucket	-	-	-

NOTE: Dimensional data is subject to manufacturing tolerances and change without notice.

FLOOR DRAINS AND ACCESSORIES

200 Series

TAG _____

A Multi-Port Distribution Unit with an Automatic Trap Primer, Series 260

Product Description: The automatic trap primer and multi-port distribution unit are designed to provide the installer a positive method to simultaneously prime a maximum of four floor drain traps. The distribution unit consists of four connections and two plugs.

The trap primer with distribution unit is used where trapped floor drains installed in remote locations or installations subject to extenuating conditions may experience trap seal evaporation. The trap primer maintains the water seal in the trap preventing sewer gas and other objectionable and contaminated odors to escape through the drain(s).

Features and Benefits:

- Reduced material and installation cost—one trap primer distribution unit instead of four trap primers
- Replenishes evaporated water in the floor drain P-trap to prevent escape of sewer gases
- Anti-Siphon ports in the primer body prevent siphonage of trap water into the water supply line
- Activates with as little as 20 PSI
- Automatic release of water from the trap primer is factory set—no field adjustment necessary

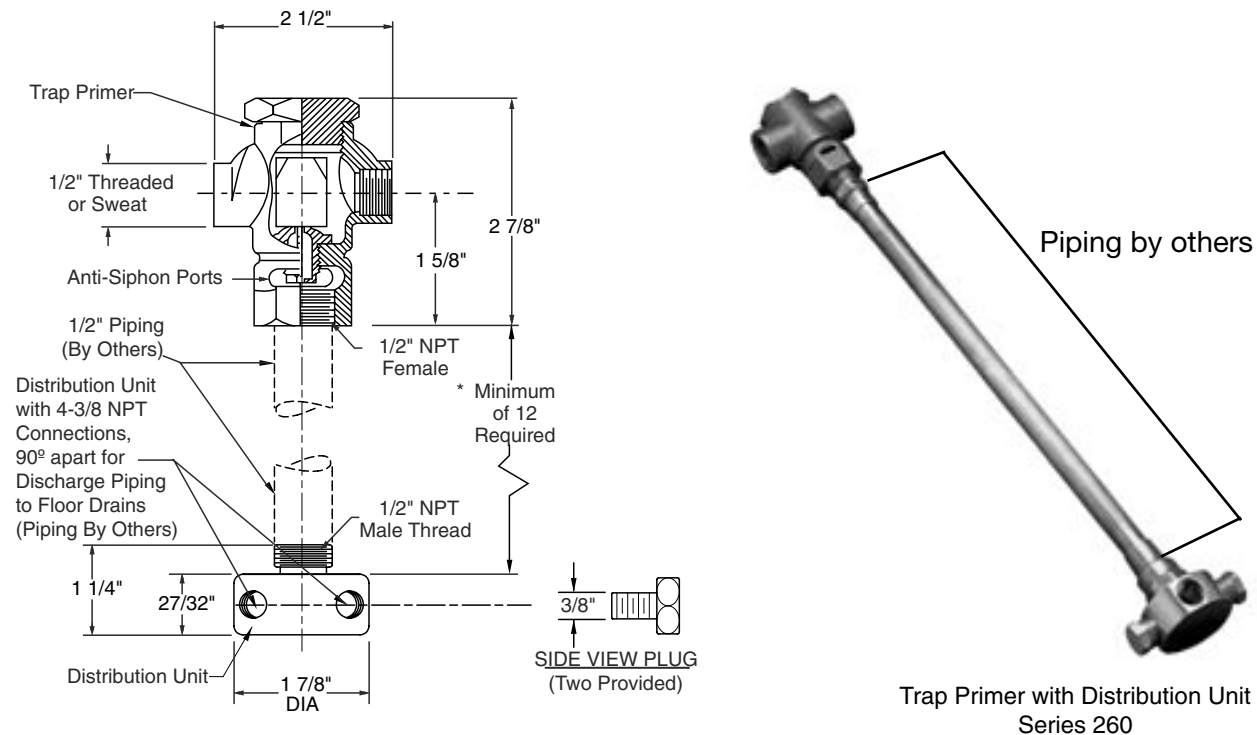


FIG. NUMBER	PIPE SIZE	OUTLET
260-T	1/2"	NPT female inlet and outlet connection
260-SC	1/2"	Copper sweat connection

NOTE: Dimensional data is subject to manufacturing tolerances and change without notice.

FLOOR DRAINS AND ACCESSORIES

200 Series

TAG _____

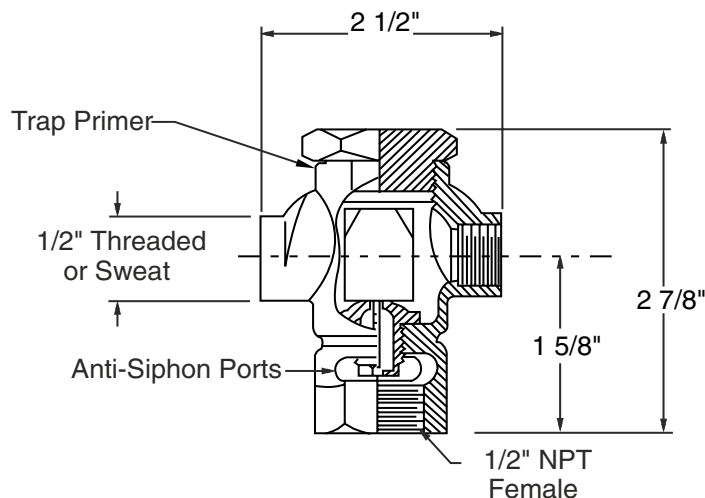
Automatic Trap Primer, Series 261

Product Description:

Used where trapped drains are installed in locations used infrequently or other conditions might permit water seal to evaporate, allowing sewer gas or objectionable and contaminating odors to escape through the drain. A trap primer is recommended to compensate for evaporation while providing a water seal in the trap at all times.

Features and Benefits:

- Replenishes evaporated water in the floor drain P-trap to prevent escape of sewer gases
- Cast bronze with 1/2" sweat or threaded connection available
- Anti-Siphon ports in trap primer body prevent siphonage of trap water and backflow into the potable water supply line



Series 261

Series Number	Pipe Size	Inlet and Outlet
<input type="checkbox"/> 261-T	1/2"	NPT female inlet and outlet connection
<input type="checkbox"/> 261-SC	1/2"	Copper sweat connection

NOTE: Dimensional data is subject to manufacturing tolerances and change without notice.



Built by:
JAY R. SMITH MFG. CO.
DIVISION OF SMITH INDUSTRIES, INC.

Series 261

SPM 1013
11/04

Sanitary Floor Sink

300 Series

(Body and Grate Ordered Separately)

Ordering Guidelines

Example: Figure No. _____ 320 - Y02
Type of Outlet _____
Pipe Size (Inches) _____

Grate Ordering Guidelines

320-10 - Full Grate

320-11 - Two Piece 1/2 Grate

320-12 - One Piece 1/2 Grate

320-13 - One Piece 3/4 Grate

Outlet Types

Y No-Hub

Pipe Sizes (Inches)

02 - 2"

03 - 3"

04 - 4"

SANITARY FLOOR SINKS

300 Series

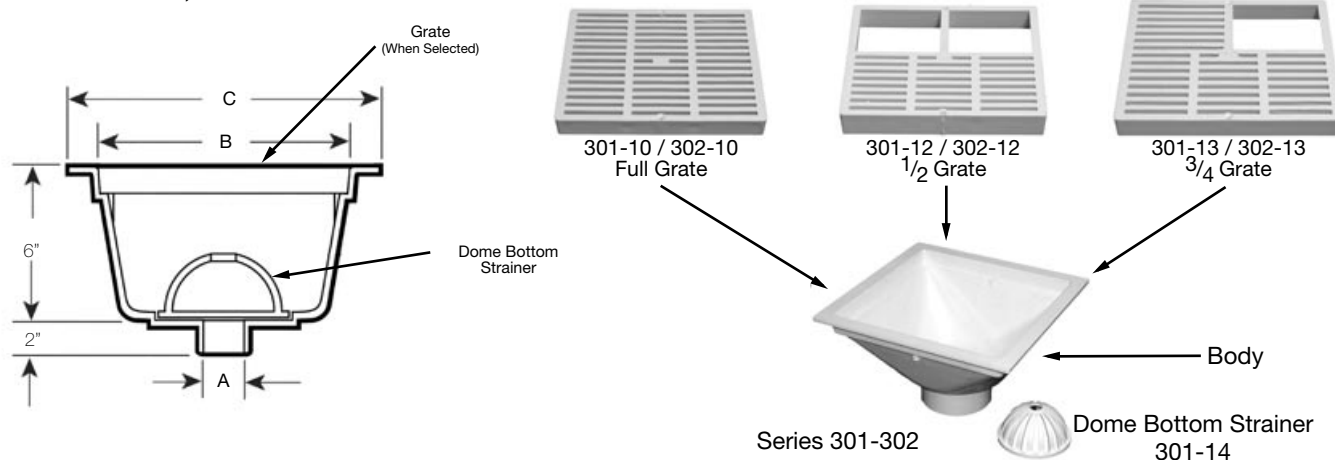
PVC Floor Sinks Less Flange, Series 301-302

TAG _____

Product Description: Recommended for use in applications requiring an indirect waste receiver such as restaurants, cafeterias, supermarkets, food processing plants and dairies. Constructed of high quality PVC, this floor sink is engineered to conform to the strict codes and to provide maximum sanitary conditions. This PVC floor sink has excellent resistance to chemicals such as the acids contained in fruits, vegetables and fatty substances. The smooth, uniform interior surface is easy to clean and the drain will not chip, rust or corrode.

Features and Benefits:

- PVC offers excellent resistance to chemicals, will not chip, rust or corrode
- Light weight facilitates transportation, handling, and installation
- Smooth, uniformly contoured interior surface allows for easy cleaning
- 9" and 12" square flangeless PVC body with dome bottom strainer
- 3 grate configurations available, full, three-quarter, and half
- IAPMO Listed, File No. 2287



Series Number	Material Type	Description	A Outlet Size	B	C	Outlet Type
301-H03	PVC	9" Square Body Less Flange, 6" Deep	3"	9"	11"	Hub
301-H04	PVC	9" Square Body Less Flange, 6" Deep	4"	9"	11"	Hub
301-10	PVC	9" x 9" (one piece) grate, Full	-	9"	11"	-
301-12	PVC	9" x 9" (one piece) grate, 1/2	-	9"	11"	-
301-13	PVC	9" x 9" (one piece) grate, 3/4	-	9"	11"	-
301-14	PVC	Dome Bottom Strainer	-	-	-	-
302-H02	PVC	12" Square Body Less Flange, 6" Deep	2"	12"	14"	Hub
302-H03	PVC	12" Square Body Less Flange, 6" Deep	3"	12"	14"	Hub
302-H04	PVC	12" Square Body Less Flange, 6" Deep	4"	12"	14"	Hub
302-10	PVC	12" x 12" (one piece) grate, Full	-	12"	14"	-
302-12	PVC	12" x 12" (one piece) grate, 1/2	-	12"	14"	-
302-13	PVC	12" x 12" (one piece) grate, 3/4	-	12"	14"	-

NOTE: Dimensional data is subject to manufacturing tolerances and change without notice.



Built by:
JAY R. SMITH MFG. CO.
DIVISION OF SMITH INDUSTRIES, INC.



Series 301-302

SPM 1013
11/05

SANITARY FLOOR SINKS

300 Series

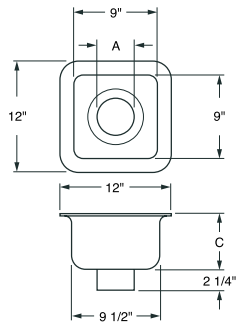
Acid Resistant Enamel (ARE) Floor Sinks, Series 320-345

TAG _____

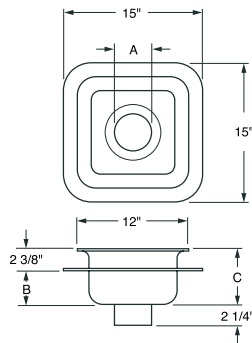
Product Description: Recommended for sanitary installations. ARE floor sinks consist of a cast iron receptor (body) with a white acid resistant enamel interior and anti-splash dome strainer. Floor sinks are available with or less flange.

Features and Benefits:

- Porcelain enamel, acid resistant, coated cast iron body and grate
- Available with or less flange
- Suitable for sanitary areas
- Grates available in full, 1/2 and 3/4 variations
- Body includes anti-splash dome strainer



Less Flange



With Flange



Series 320-340



Series 320-10



Series 325-345

Series Number	Description	Outlet Size	Outlet Type	B	C
320-Y02	12" Square Body Less Flange, 6" deep	2"	No-Hub	—	6"
320-Y03	12" Square Body Less Flange, 6" deep	3"	No-Hub	—	6"
320-Y04	12" Square Body Less Flange, 6" deep	4"	No-Hub	—	6"
330-Y02	12" Square Body Less Flange, 8" deep	2"	No-Hub	—	8"
330-Y03	12" Square Body Less Flange, 8" deep	3"	No-Hub	—	8"
330-Y04	12" Square Body Less Flange, 8" deep	4"	No-Hub	—	8"
340-Y02	12" Square Body Less Flange, 10" deep	2"	No-Hub	—	10"
340-Y03	12" Square Body Less Flange, 10" deep	3"	No-Hub	—	10"
340-Y04	12" Square Body Less Flange, 10" deep	4"	No-Hub	—	10"
325-Y02	12" Square Body with Flange, 6" deep	2"	No-Hub	4-1/8"	6-1/2"
325-Y03	12" Square Body with Flange, 6" deep	3"	No-Hub	4-1/8"	6-1/2"
325-Y04	12" Square Body with Flange, 6" deep	4"	No-Hub	4-1/8"	6-1/2"
335-Y02	12" Square Body with Flange, 8" deep	2"	No-Hub	6-1/8"	8-1/2"
335-Y03	12" Square Body with Flange, 8" deep	3"	No-Hub	6-1/8"	8-1/2"
335-Y04	12" Square Body with Flange, 8" deep	4"	No-Hub	6-1/8"	8-1/2"
345-Y02	12" Square Body with Flange, 10" deep	2"	No-Hub	8-1/8"	10-1/2"
345-Y03	12" Square Body with Flange, 10" deep	3"	No-Hub	8-1/8"	10-1/2"
345-Y04	12" Square Body with Flange, 10" deep	4"	No-Hub	8-1/8"	10-1/2"
Series Number	Available Grates				
320-10	Floor Sink (one piece) ARE Grate, full				
320-11	Floor Sink (two piece) ARE Grate, 1/2				
320-12	Floor Sink (one piece) ARE Grate, 1/2				
320-13	Floor Sink (one piece) ARE Grate, 3/4				

NOTE: Dimensional data is subject to manufacturing tolerances and change without notice.



Built by:
JAY R. SMITH MFG. CO.
DIVISION OF SMITH INDUSTRIES, INC.

Series
320-345

SPM 1013
11/04

Floor Cleanouts and Accessories

400 Series

(Body and Top Ordered Separately)

Ordering Guidelines

Example: Figure No. _____
Type of Outlet _____
Pipe Size (Inches) _____

Top Ordering Guidelines

410-10 - 5 3/4" Diameter Cast Iron Top (Medium Duty)

410-11 - 5 3/4" Diameter Cast Iron Top w/Ductile

Cover Top (Heavy Duty)

410-12 - 6" Diameter Nickel Bronze Top (Medium Duty)

410-13 - 5 3/4" Square Nickel Bronze Top (Medium Duty)

410-14 - 5 3/4" Diameter Tile Recessed Nickel

Bronze Top (Medium Duty)

Outlet Types

L Speedi-Set for Service Weight or No-Hub Cast Iron Pipe

LXH Speedi-Set for Extra Heavy Weight Cast Iron or PVC Pipe

Y No-Hub

Pipe Sizes (Inches)

02 - 2"

03 - 3"

04 - 4"

FLOOR CLEANOUTS AND ACCESSORIES

400 Series

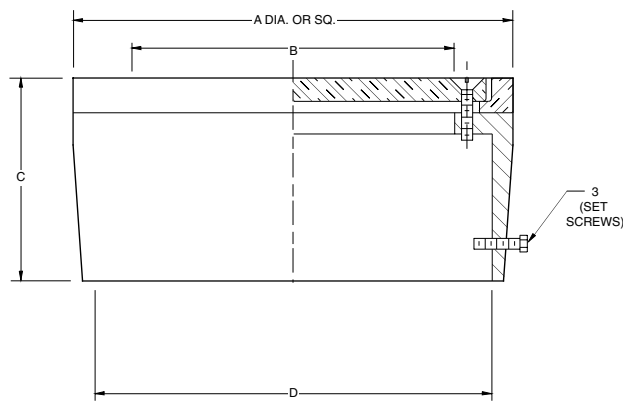
TAG _____

Cleanout Top Assembly, Series 405 - 406

Product Description: Cleanout top assembly with cast iron frame and nickel bronze round or square top for use with various pipe materials such as cast iron service weight or extra heavy weight with hub or PVC with mechanical coupling.

Features and Benefits:

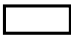
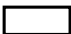
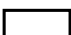
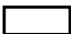

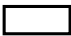
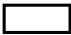

- Tops available in either round or square nickel bronze
- Fits over 2" - 6" cast iron service weight or extra heavy pipe with hub
- Fits over 2" - 4", 6" PVC pipe with mechanical coupling



Series 405



Series 406

Series Number	Round Top Size-"A"	Clear Open-"B"	Height-"C"	I.D.-"D"
 405-04 (Light Duty)	4-1/2"	3-1/8"	2-5/8"	4-1/4"
 405-05 (Light Duty)	5-15/16"	4-3/8"	2-5/8"	5-3/8"
 405-06 (Light Duty)	6-5/8"	4-15/16"	2-7/8"	6-1/4"
 405-08 (Light Duty)	8-11/16"	6-7/8"	2-15/16"	8-1/4"
Series Number	Square Top Size-"A"	Clear Open-"B"	Height-"C"	I.D.-"D"
 406-04 (Light Duty)	4-1/2"	3-1/8"	2-5/8"	4-1/4"
 406-05 (Light Duty)	5-15/16"	4-3/8"	2-5/8"	5-3/8"
 406-06 (Light Duty)	6-5/8"	4-15/16"	2-7/8"	6-1/4"
 406-08 (Light Duty)	8-11/16"	6-7/8"	2-15/16"	8-1/4"

NOTE: Dimensional data is subject to manufacturing tolerances and change without notice.



Built by:
JAY R. SMITH MFG. CO.
DIVISION OF SMITH INDUSTRIES, INC.

Series 405 - 406

SPM 1013
11/04

FLOOR CLEANOUTS AND ACCESSORIES

400 Series

TAG _____

Adjustable Floor Cleanout for Non-Membrane Floors, Series 409

Product Description: Designed for use in non-membrane floor areas. Complete with PVC body available with a selection of adjustable cleanout tops.

Features and Benefits, Body:

- Designed for non-membrane floors
- Schedule 40 PVC body with 4" Hub outlet
- 4" FIP Threads
- For on-grade installation

Features and Benefits, Tops:

- Round and square nickel bronze secured solid covers with gasket
- Round and square nickel bronze secured solid covers with gasket and closure plug
- Round cast iron and cast iron with ductile iron gasketed cover
- Round cast iron and cast iron with ductile iron gasketed cover and closure plug
- 4" NPSM straight threaded shank on tops



Series 410-10



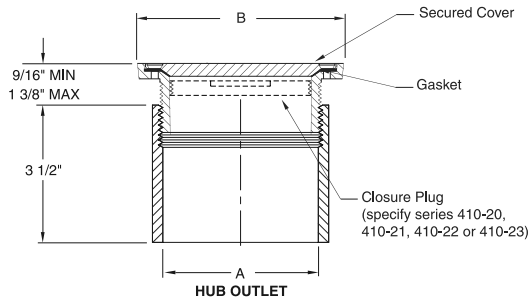
Series 410-11



Series 410-12



Series 410-13



Series 409



Series 410-14



Series 410-20-23*
(with closure plug)

Series Number	Description	Outlet Size-"A"	Outlet Type
<input type="checkbox"/> 409-H04	PVC Adjustable Cleanout, Body Only	4"	Hub
Series Number	Description	Top Size-"B"	Pipe Size
<input type="checkbox"/> 410-10	Adj. Round Cast Iron Solid Cover (Medium Duty)	5-3/4"	4" NPSM Straight Threaded Shank
<input type="checkbox"/> 410-11	Adj. Round CI w/Ductile Iron Solid Cover (Heavy Duty)	5-3/4"	4" NPSM Straight Threaded Shank
<input type="checkbox"/> 410-12	Adj. Round Nickel Bronze Solid Cover (Medium Duty)	6"	4" NPSM Straight Threaded Shank
<input type="checkbox"/> 410-13	Adj. Square Nickel Bronze Solid Cover (Medium Duty)	5-3/4"	4" NPSM Straight Threaded Shank
<input type="checkbox"/> 410-14	Adj. Round NB Solid Cover, Tile Recess (Medium Duty)	5-3/4"	4" NPSM Straight Threaded Shank
<input type="checkbox"/> 410-20	Adj. Round C.I. Solid Cover, w/Closure Plug (Med. Duty)	5-3/4"	4" NPSM Straight Threaded Shank
<input type="checkbox"/> 410-21	Adj. Round C.I. w/D.I. Solid Cover w/Closure Plug (Hvy. Duty)	6"	4" NPSM Straight Threaded Shank
<input type="checkbox"/> 410-22	Adj. Round NB Solid Cover w/Closure Plug (Med. Duty)	5-3/4"	4" NPSM Straight Threaded Shank
<input type="checkbox"/> 410-23	Adj. Square NB Solid Cover w/Closure Plug (Med. Duty)	5-3/4"	4" NPSM Straight Threaded Shank

NOTE: Dimensional data is subject to manufacturing tolerances and change without notice.

*To order with closure plug see 410-20, 21, 22, 23



A Product of:
JAY R. SMITH MFG. CO.®
DIVISION OF SMITH INDUSTRIES, INC.

Series 409
SPM 1013
06/08

FLOOR CLEANOUTS AND ACCESSORIES

400 Series

TAG_____

Adjustable Floor Cleanout for Non-Membrane Floors, Series 410

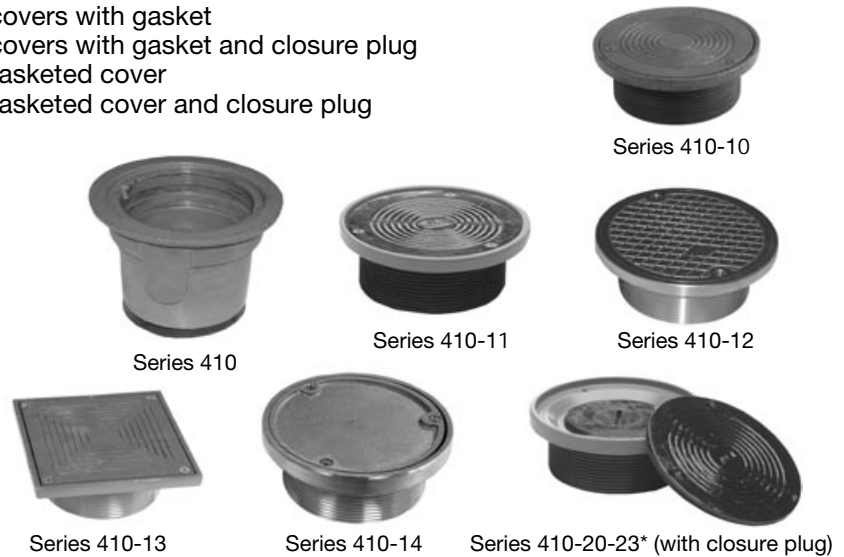
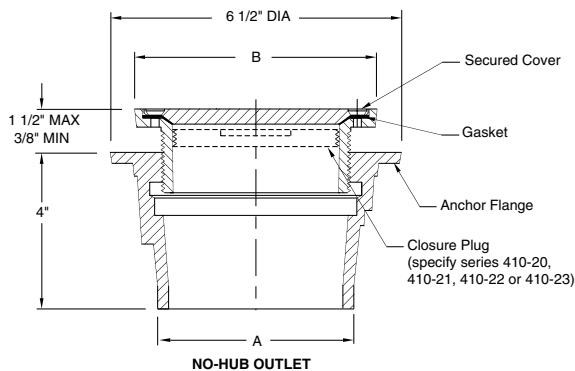
Product Description: Designed for use in non-membrane floor areas. Complete with cast iron body coated to protect against corrosion, an adjustable cleanout and a Scoriated gasketed cover.

Features and Benefits, Body:

- Designed for non-membrane floors
- Cast iron body coated to protect against corrosion
- Push-on (service weight and extra heavy) and no-hub outlets available in 2", 3" and 4" pipe sizes

Features and Benefits, Tops:

- Round and square nickel bronze secured solid covers with gasket
- Round and square nickel bronze secured solid covers with gasket and closure plug
- Round cast iron and cast iron with ductile iron gasketed cover
- Round cast iron and cast iron with ductile iron gasketed cover and closure plug
- 4" NPSM straight threaded shank on tops



Series Number	Description	Outlet Size-"A"	Outlet Type
<input type="checkbox"/> 410-L02	Adjustable Cleanout, Body Only	2"	Push-On, Service Weight or No-Hub CI Pipe
<input type="checkbox"/> 410-L03	Adjustable Cleanout, Body Only	3"	Push-On, Service Weight or No-Hub CI Pipe
<input type="checkbox"/> 410-L04	Adjustable Cleanout, Body Only	4"	Push-On, Service Weight or No-Hub CI Pipe
<input type="checkbox"/> 410-LXH02	Adjustable Cleanout, Body Only	2"	Push-On, Extra Heavy Weight CI or PVC Pipe
<input type="checkbox"/> 410-LXH03	Adjustable Cleanout, Body Only	3"	Push-On, Extra Heavy Weight CI or PVC Pipe
<input type="checkbox"/> 410-LXH04	Adjustable Cleanout, Body Only	4"	Push-On, Extra Heavy Weight CI or PVC Pipe
<input type="checkbox"/> 410-Y02	Adjustable Cleanout, Body Only	2"	No-Hub
<input type="checkbox"/> 410-Y03	Adjustable Cleanout, Body Only	3"	No-Hub
<input type="checkbox"/> 410-Y04	Adjustable Cleanout, Body Only	4"	No-Hub
Series Number	Description	Top Size-"B"	Pipe Size
<input type="checkbox"/> 410-10	Adj. Round Cast Iron Solid Cover (Medium Duty)	5-3/4"	4" NPSM Straight Threaded Shank
<input type="checkbox"/> 410-11	Adj. Round CI w/Ductile Iron Solid Cover (Heavy Duty)	5-3/4"	4" NPSM Straight Threaded Shank
<input type="checkbox"/> 410-12	Adj. Round Nickel Bronze Solid Cover (Medium Duty)	6"	4" NPSM Straight Threaded Shank
<input type="checkbox"/> 410-13	Adj. Square Nickel Bronze Solid Cover (Medium Duty)	5-3/4"	4" NPSM Straight Threaded Shank
<input type="checkbox"/> 410-14	Adj. Round NB Solid Cover, Tile Recess (Medium Duty)	5-3/4"	4" NPSM Straight Threaded Shank
<input type="checkbox"/> 410-20	Adj. Round C.I. Solid Cover, w/Closure Plug (Med. Duty)	5-3/4"	4" NPSM Straight Threaded Shank
<input type="checkbox"/> 410-21	Adj. Round C.I. w/D.I. Solid Cover w/Closure Plug (Hvy. Duty)	6"	4" NPSM Straight Threaded Shank
<input type="checkbox"/> 410-22	Adj. Round NB Solid Cover w/Closure Plug (Med. Duty)	5-3/4"	4" NPSM Straight Threaded Shank
<input type="checkbox"/> 410-23	Adj. Square NB Solid Cover w/Closure Plug (Med. Duty)	5-3/4"	4" NPSM Straight Threaded Shank

NOTE: Dimensional data is subject to manufacturing tolerances and change without notice.

*To order with closure plug see 410-20, 21, 22, 23



Built By:
JAY R. SMITH MFG. CO.
DIVISION OF SMITH INDUSTRIES, INC.

Series 410
SPM 1013
6/06

FLOOR CLEANOUTS AND ACCESSORIES

400 Series

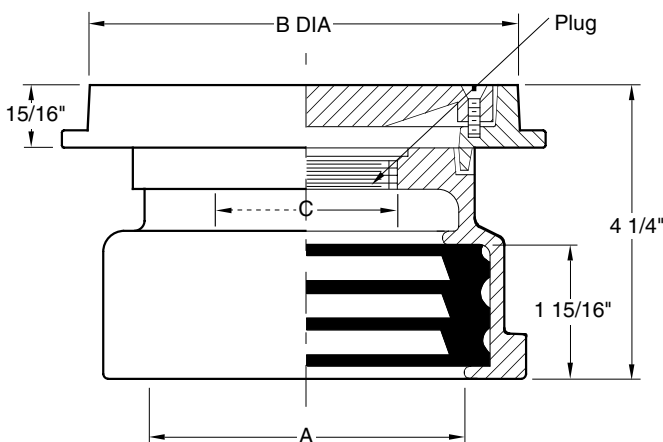
TAG_____

Round Non-Adjustable Heavy-Duty Cleanout Top, Series 420

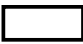
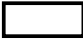
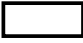
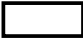



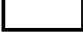
Product Description: Used in industrial and commercial buildings where floors are subject to heavy load traffic.

Features and Benefits:

- Round non-adjustable floor cleanout
- A.B.S. tapered threaded plug
- Heavy-duty Scoriated cast iron top
- 6-1/4" diameter push-on type cleanout (L sized for service weight or no-hub cast iron, LXH sized for extra heavy cast iron or PVC pipe)



Series 420

Series Number	Pipe Size-"A"	Top Size-"B"	Plug Size-"C"
 420-L02	2"	6-1/4"	3-1/2"
 420-L03	3"	6-1/4"	3-1/2"
 420-L04	4"	6-1/4"	3-1/2"
 420-L06	6"	8-1/4"	4"
 420-LXH02	2"	6-1/4"	3-1/2"
 420-LXH03	3"	6-1/4"	3-1/2"
 420-LXH04	4"	6-1/4"	3-1/2"
 420-LXH06	6"	8-1/4"	4"

NOTE: Dimensional data is subject to manufacturing tolerances and change without notice.

Water Hammer Arresters, Hydrants and Accessories

500 Series

Ordering Guidelines

Example:

Figure No. _____ 520 -SC -A
Type of Outlet _____
P.D.I. Sizing Symbol _____

Outlet Types

T Threaded

SC Sweat Connection

Water Hammer Arrester, Hydrants and Accessories

500 Series

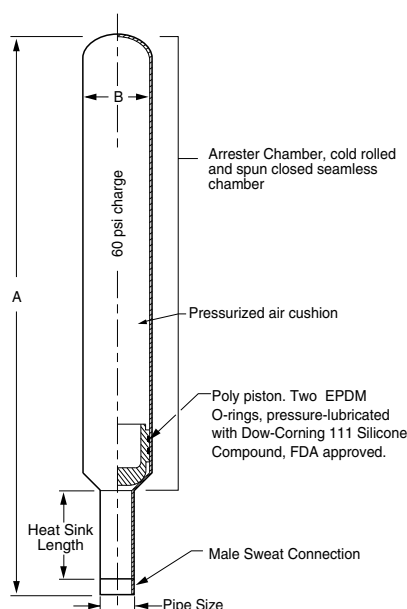
TAG _____

Piston Type Water Hammer Arresters, Series 520-SC

Product Description: Recommended for plumbing fixtures in office buildings, retail, schools, hospitals, correctional facilities, and public buildings. Sweat connection piston type water hammer arresters consists of seamless, cold rolled and spun closed copper; pressurized arrester chamber; poly piston with two EPDM O-rings.

Features and Benefits:

- Designed to absorb and control shock pressure in water lines from surges during quick valve closure
- Maximum rated surge pressure: 350 P.S.I.G.
- Operating line flow pressure up to 60 P.S.I.G.
- Working temperature range: 33° to 250°F
- Listed by the American Society of Sanitary Engineers to ASSE 1010 Standard
- IAPMO Listed, File No. 4785



Sweat Connection Piston Water Hammer Arrester
Series 520-SC

WATER HAMMER ARRESTER SIZING CHART

Smith Fig. No.	Pipe Size	Size	Air Charge	Dimensions		Fixture Unit Capacity
				A	B (DIA)	
520-SC-AA	1/2"	AA*	60 psig	5.62"	.875"	RESIDENTIAL
520-SC-A	1/2"	A	60 psig	6.56"	1.125"	1 to 3
520-SC-B	3/4"	B	60 psig	10.81"	1.38"	4 to 11
520-SC-C	1"	C	60 psig	14.03"	1.38"	33 to 60
520-SC-D	1-1/4"	D	60 psig	13.53"	2.13"	61 to 113
520-SC-E	1-1/2"	E	60 psig	16.84"	2.13"	114 to 154
520-SC-F	2"	F	60 psig	14.122"	2.63"	155 to 330

For flow pressures up to 60 P.S.I.G.						
Length of Pipe	Nominal Pipe Diameter					
	1/2"	3/4"	1"	1 1/4"	1 1/2"	2"
25'	A	A	B	C	D	E
50'	A	B	C	D	E	F
75'	B	C	D	AE	F	EF
100'	C	D	E	F	CF	FF
125'	C	D	F	AF	EF	EFF
150'	D	E	F	DF	FF	FFF

NOTE: Dimensional data is subject to manufacturing tolerances and change without notice

* NOTE: AA size for residential applications only.

NOTE: Per ASSE Standard, systems exceeding 60 P.S.I.G.

shall be installed with a pressure reducing valve upstream of the unit



Built by:
JAY R. SMITH MFG. CO.
DIVISION OF SMITH INDUSTRIES, INC.

SERIES 520-SC

SPM 1013

11/05

Water Hammer Arrestor, Hydrants and Accessories

500 Series

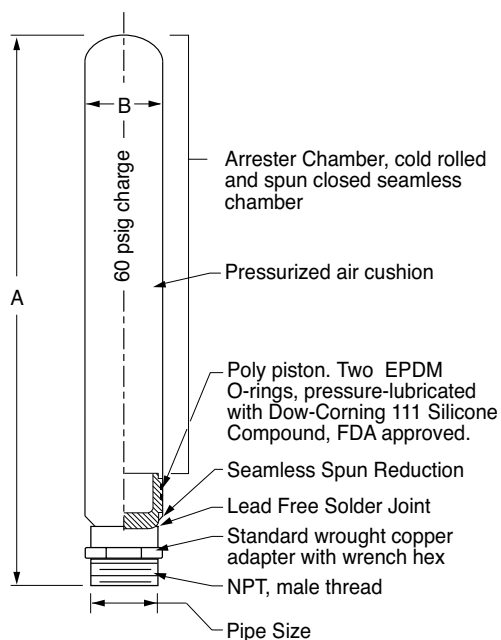
TAG _____

Piston Type Water Hammer Arresters, Series 520-T

Product Description: Recommended for plumbing fixtures in office buildings, retail, schools, hospitals, correctional facilities, and public buildings. Threaded connection piston type water hammer arresters consists of seamless, cold rolled and spun closed copper; pressurized arrester chamber; poly piston with two EPDM O-rings.

Features and Benefits:

- Designed to absorb and control shock pressure in water lines from surges during quick valve closure
- Maximum rated surge pressure: 350 P.S.I.G.
- Operating line flow pressure up to 60 P.S.I.G.
- Working temperature range: 33° to 250°F
- Listed by the American Society of Sanitary Engineers to ASSE 1010 Standard
- IAPMO Listed, File No. 4785



Threaded Connection Piston Water Hammer Arrestor
Series 520-T

WATER HAMMER ARRESTER SIZING CHART

Smith Fig. No.	Pipe Size, NPT	Size	Air Charge	Dimensions		Fixture Unit Capacity
				A	B (DIA)	
520-T-AA	1/2"	AA*	60 psig	5.56"	.875"	RESIDENTIAL
520-T-A	1/2"	A	60 psig	6.875"	1.125"	1 to 11
520-T-B	3/4"	B	60 psig	8.69"	1.38"	12 to 32
520-T-C	1"	C	60 psig	12.00"	1.38"	33 to 60
520-T-D	1-1/4"	D	60 psig	12.00"	2.13"	61 to 113
520-T-E	1-1/2"	E	60 psig	14.56"	2.13"	114 to 154
520-T-F	2"	F	60 psig	16.38"	2.13"	155 to 330

For flow pressures up to 60 P.S.I.G.						
Length of Pipe	Nominal Pipe Diameter					
	1/2"	3/4"	1"	1 1/4"	1 1/2"	2"
25'	A	A	B	C	D	E
50'	A	B	C	D	E	F
75'	B	C	D	AE	F	EF
100'	C	D	E	F	CF	FF
125'	C	D	F	AF	EF	EFF
150'	D	E	F	DF	FF	FFF

NOTE: Dimensional data is subject to manufacturing tolerances and change without notice

* NOTE: AA size for residential applications only

NOTE: Per ASSE Standard, systems exceeding 60 P.S.I.G.

shall be installed with a pressure reducing valve upstream of the unit



Built by:
JAY R. SMITH MFG. CO.
DIVISION OF SMITH INDUSTRIES, INC.

SERIES 520-T

SPM 1013

11/05

WATER HAMMER ARRESTERS, HYDRANTS AND ACCESSORIES

500 Series

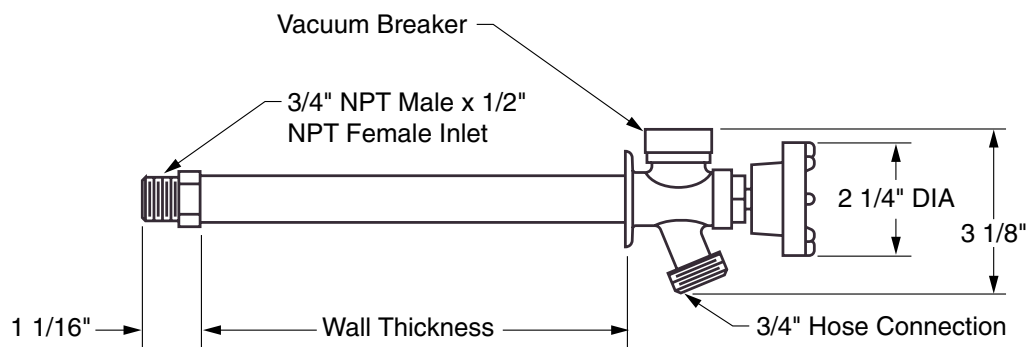
Freezeless Sillcock, Series 530

TAG _____

Product Description: Exposed anti-siphon non-freeze lawn faucet with chrome finish, black handle, brass casing, bronze interior parts, internal vacuum breaker, and operating rod with free-floating compression closure valve.

Features and Benefits:

- Used for small shopping centers, homes, service stations, churches, motels, and fast food restaurants
- Backflow protected
- Self-draining, freezeless sillcock
- Listed by the American Society of Sanitary Engineers to ASSE Standard 1019-A and IAPMO Listed, File No. 3856



Series 530

Series Number	Inlet Connection	Wall Thickness	Finish
530-04	3/4" NPT Male Thread x 1/2" NPT Female Thread	4"	Chrome
530-06	3/4" NPT Male Thread x 1/2" NPT Female Thread	6"	Chrome
530-08	3/4" NPT Male Thread x 1/2" NPT Female Thread	8"	Chrome
530-10	3/4" NPT Male Thread x 1/2" NPT Female Thread	10"	Chrome
530-12	3/4" NPT Male Thread x 1/2" NPT Female Thread	12"	Chrome

NOTE: Dimensional data is subject to manufacturing tolerances and change without notice.



Built by:
JAY R. SMITH MFG. CO.
DIVISION OF SMITH INDUSTRIES, INC.

Series 530
SPM 1013
11/05

WATER HAMMER ARRESTERS, HYDRANTS AND ACCESSORIES

500 Series

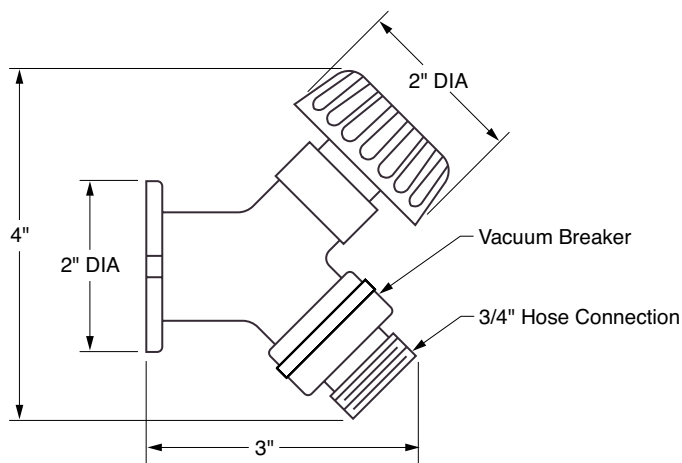
TAG _____

Mild Climate, Anti-Siphon Sillcock, Series 560

Product Description: Exposed anti-siphon wall faucet for mild climate installations. Complete with external vacuum breaker, rough brass or chrome finish, black handle, brass casing, bronze interior parts, and 3/4" male hose connection. Loose key provided with each sillcock.

Features and Benefits:

- Used in mild climate areas on homes, service stations, churches, motels, and fast food restaurants and in garden, lawn, and other water systems
- A vacuum breaker, backflow protected wall sillcock
- Vacuum breaker listed by the American Society of Sanitary Engineers to ASSE Standard 1011 and IAPMO Listed, File No. 3770
- Loose key furnished with each sillcock



Series 560

Series Number	Inlet Connection	Finish
<input type="checkbox"/> 560-10	1/2" NPT Female Thread	Rough Brass
<input type="checkbox"/> 560-11	3/4" NPT Female Thread	Rough Brass
<input type="checkbox"/> 560-12	1/2" NPT Female Thread	Rough Chrome
<input type="checkbox"/> 560-13	3/4" NPT Female Thread	Rough Chrome

NOTE: Dimensional data is subject to manufacturing tolerances and change without notice.



Backwater Valves and Traps

700 Series

Ordering Guidelines

Example:

Figure No. _____ 701 - 02
Pipe Size (Inches) _____

Pipe Sizes (Inches)

02 - 2"

03 - 3"

04 - 4"

Backwater Valves and Traps

700 Series

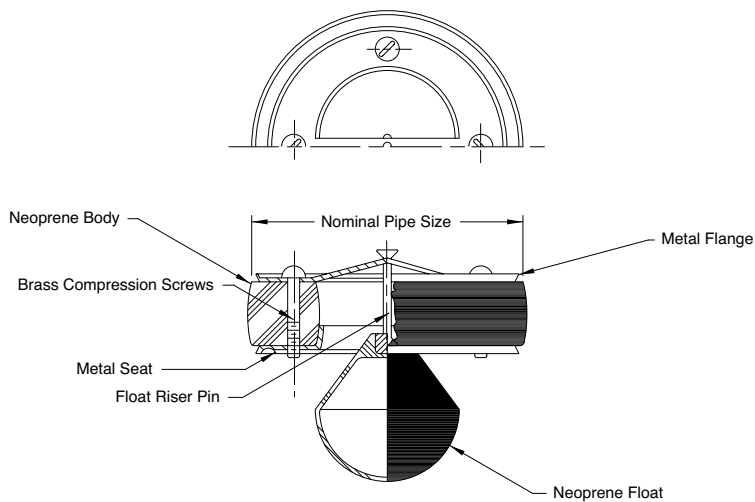
TAG_____

Round Compression Seal Type Backwater Valve, Series 701

Product Description: Designed for installation in new or existing drains where protection from sewer backflow is required. When the sewer begins to back-up, the float in the backwater valve rises to seal the drain opening until the water recedes. This valve protects basements and low lying areas in homes and businesses against sewer back-up.

Features and Benefits:

- Protects against sewer back-up
- Fits in 2", 3" and 4" pipe
- Backwater valve complete with Neoprene body and float, metal flange and seat, and brass compression screws
- Can be installed in new or existing drains
- Fits ID of drain pipe



Series 701

Series Number	Pipe Size
<input type="checkbox"/> 701-02	2"
<input type="checkbox"/> 701-03	3"
<input type="checkbox"/> 701-04	4"

NOTE: Dimensional data is subject to manufacturing tolerances and change without notice.

Interceptors

800 Series

Ordering Guides

Example:

Figure No. _____
Type of Outlet and Inlet _____
Pipe Size (Inches) _____
GPM Flow Rate _____

800 - Y02 - 04

Outlet and Inlet Types

T Threaded

Y No-Hub

Pipe Sizes (Inches)

0150 - 1 1/2"

02 - 2"

03 - 3"

INTERCEPTORS

800 Series

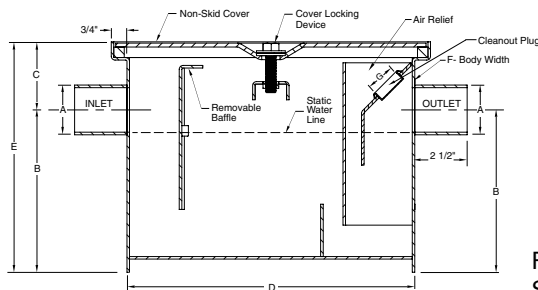
Grease Interceptors, Series 800 - 801

TAG _____

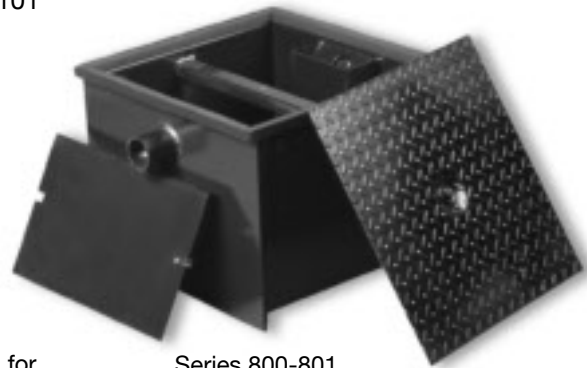
Product Description: Recommended for removing, then retaining fat, oil, and grease from wastewater in kitchen and restaurant areas where food is prepared. The 800 series grease interceptor is constructed of coated corrosion-resistant fabricated steel with no-hub connections and separate no-hub flow control; a one-piece removable baffle; diamond plate, non-skid cover; and a unique, combination cover locking/lifting device.

Features and Benefits:

- Slip-resistant diamond plate cover
- Designed to be installed in above-the-floor installations or recessed where space is limited
- One piece removable baffle assembly
- Combination cover locking/lifting device
- Constructed of fabricated steel, corrosion-resistant coated
- Regularly furnished with no-hub inlet and outlet, threaded available
- Low type grease interceptor is designed to be installed under the sink or in an area where space is limited
- Conforms to PDI Grease Interceptor Standard PDI-G101
- IAPMO Listed, File No. 2697 and C-3878



Flow Control for
Series 800-801



Series 800-801

FIG. NO.	GPM FLOW RATE	GREASE CAP LBS	A	B	C	D (LENGTH)	E (HEIGHT)	F (WIDTH)	G (Plug Size)
800-Y02-04	4	8	02"	6 7/8"	2 3/4"	12 3/8"	9 5/8"	12 3/8"	1 1/2"
800-Y02-07	7	14	02"	7 3/4"	3 1/4"	13 3/4"	11"	13 3/4"	1 1/2"
800-Y02-10	10	20	02"	8 3/4"	3 5/8"	15 1/8"	12 3/8"	15 1/8"	1 1/2"
800-Y02-15	15	30	02"	11 1/4"	3 1/2"	17 1/2"	14 3/4"	17 1/2"	1 1/2"
800-Y03-20	20	40	03"	12 3/4"	4"	19 1/2"	16 3/4"	19 1/2"	1 1/2"
800-Y03-25	25	50	03"	14 1/4"	4 1/8"	21 1/8"	18 3/8"	21 1/8"	1 1/2"
800-Y03-35	35	70	03"	14 1/2"	4 1/2"	22 1/2"	19"	22 1/2"	1 1/2"
800-Y03-50	50	100	03"	14 1/2"	5 1/4"	31 3/4"	19 3/4"	22 1/2"	1 1/2"
LOW TYPE									
801-Y03-20	20	40	03"	7"	3 1/2"	39 1/2"	10 1/2"	21 7/16"	1 1/2"
801-Y03-35	35	70	03"	7"	4 3/4"	52 1/4"	11 3/4"	27 5/16"	1 1/2"
801-Y03-50	50	100	03"	10"	5 15/16"	50 1/4"	15 15/16"	27 5/16"	1 1/2"
LOW TYPE									
800-T02-04	4	8	02"	6 7/8"	2 3/4"	12 3/8"	9 5/8"	12 3/8"	1 1/2"
800-T02-07	7	14	02"	7 3/4"	3 1/4"	13 3/4"	11"	13 3/4"	1 1/2"
800-T02-10	10	20	02"	8 3/4"	3 5/8"	15 1/8"	12 3/8"	15 1/8"	1 1/2"
800-T02-15	15	30	02"	11 1/4"	3 1/2"	17 1/2"	14 3/4"	17 1/2"	1 1/2"
800-T03-20	20	40	03"	12 3/4"	4"	19 1/2"	16 3/4"	19 1/2"	1 1/2"
800-T03-25	25	50	03"	14 1/4"	4 1/8"	21 1/8"	18 3/8"	21 1/8"	1 1/2"
800-T03-35	35	70	03"	14 1/2"	4 1/2"	22 1/2"	19"	22 1/2"	1 1/2"
800-T03-50	50	100	03"	14 1/2"	5 1/4"	31 3/4"	19 3/4"	22 1/2"	1 1/2"
LOW TYPE									
801-T03-20	20	40	03"	7"	3 1/2"	39 1/2"	10 1/2"	21 7/16"	1 1/2"
801-T03-35	35	70	03"	7"	4 3/4"	52 1/4"	11 3/4"	27 5/16"	1 1/2"
801-T03-50	50	100	03"	10"	5 15/16"	50 1/4"	15 15/16"	27 5/16"	1 1/2"

NOTE: Dimensional data is subject to manufacturing tolerances and change without notice.



A Product of:
JAY R. SMITH MFG. CO.
DIVISION OF SMITH INDUSTRIES, INC.



Sizes 20-50 GPM



Sizes 7-15 GPM

SERIES 800-801

SPM 1013

6/06

INTERCEPTORS

800 Series

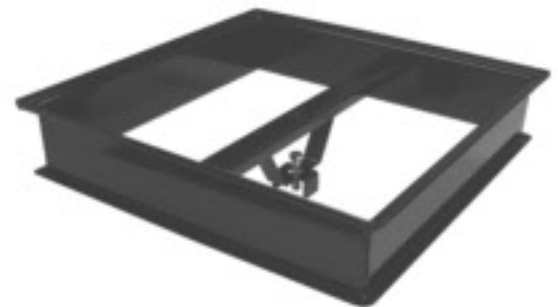
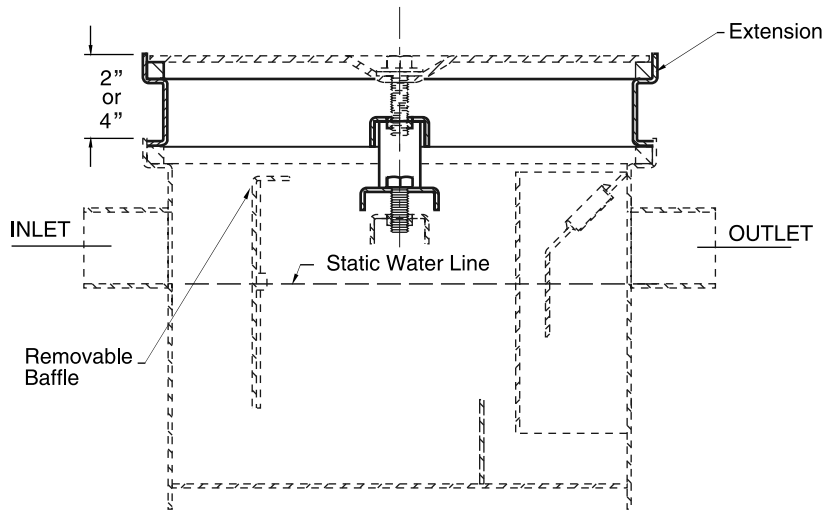
Grease Interceptor Extensions, Series 800

TAG _____






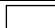










Product Description: Bolt on extension to raise interceptor top to finished floor level. Extensions fit the Series 800 grease interceptors.

Features and Benefits:

- Available in 2" and 4" heights.
- Stackable - stack multiple extensions to meet required height.



Series 800 Extension

Fig. Number	Description	Extension Height
 800-04-2EXT	2" Extension for 800-04	2"
 800-04-4EXT	4" Extension for 800-04	4"
 800-07-2EXT	2" Extension for 800-07	2"
 800-07-4EXT	4" Extension for 800-07	4"
 800-10-2EXT	2" Extension for 800-10	2"
 800-10-4EXT	4" Extension for 800-10	4"
 800-15-2EXT	2" Extension for 800-15	2"
 800-15-4EXT	4" Extension for 800-15	4"
 800-20-2EXT	2" Extension for 800-20	2"
 800-20-4EXT	4" Extension for 800-20	4"
 800-25-2EXT	2" Extension for 800-25	2"
 800-25-4EXT	4" Extension for 800-25	4"
 800-35-2EXT	2" Extension for 800-35	2"
 800-35-4EXT	4" Extension for 800-35	4"
 800-50-2EXT	2" Extension for 800-50	2"
 800-50-4EXT	4" Extension for 800-50	4"



A Product of:
JAY R. SMITH MFG. CO.®
DIVISION OF SMITH INDUSTRIES, INC.

Series 800
SPM 1013
1/08

INTERCEPTORS

800 Series

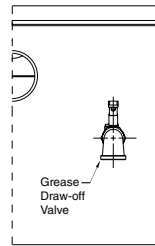
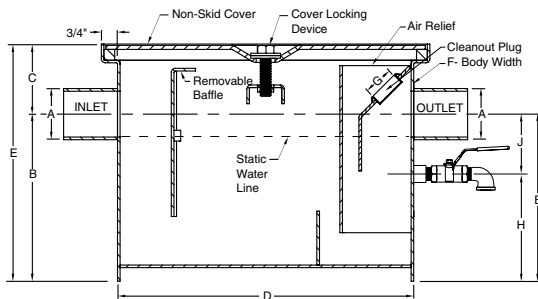
TAG _____

Grease Interceptors with Semi-Automatic Draw-Off, Series 802 - 803

Product Description: Recommended for retaining, then removing fat, oil, and grease from wastewater in kitchen and restaurant areas where food is prepared. The semi-automatic draw-off grease interceptor is constructed of coated corrosion-resistant fabricated steel with no-hub connections and separate no-hub flow control; a one-piece removable baffle; diamond plate, non-skid cover; draw-off pipe and valve; and a unique, combination cover locking/lifting device. The semi-automatic draw-off feature permits grease removal without removing the cover.

Features and Benefits:

- Slip-resistant diamond plate cover
- Designed to be installed in above-the-floor installations or recessed where space is limited
- One piece removable baffle assembly
- Combination cover locking/lifting device
- Constructed of fabricated steel, corrosion-resistant coated
- Regularly furnished with no-hub inlet and outlet, threaded available
- Low type grease interceptor is designed to be installed under the sink or in an area where space is limited
- Draw-off eliminates the messy cleaning job associated with ordinary grease interceptors
- Conforms to PDI Grease Interceptor Standard PDI-G101
- IAPMO Listed, File No. 2697 and C-3878



Flow Control for Series 802-803



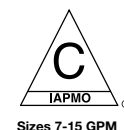
Series 802-803

FIG. NO.	GPM FLOW RATE	GREASE CAP LBS	A	B	C	D (LENGTH)	E (HEIGHT)	F (WIDTH)	G (Plug Size)	H	J
802-Y02-04	4	8	02"	6 7/8"	2 3/4"	12 3/8"	9 5/8"	12 3/8"	1 1/2"	4 7/8"	2"
802-Y02-07	7	14	02"	7 3/4"	3 1/4"	13 3/4"	11"	13 3/4"	1 1/2"	5 3/4"	2"
802-Y02-10	10	20	02"	8 3/4"	3 5/8"	15 1/8"	12 3/8"	15 1/8"	1 1/2"	6 1/4"	2-1/2"
802-Y02-15	15	30	02"	11 1/4"	3 1/2"	17 1/2"	14 3/4"	17 1/2"	1 1/2"	8 3/4"	2-1/2"
802-Y03-20	20	40	03"	12 3/4"	4"	19 1/2"	16 3/4"	19 1/2"	1 1/2"	9 3/4"	3"
802-Y03-25	25	50	03"	14 1/4"	4 1/8"	21 1/8"	18 3/8"	21 1/8"	1 1/2"	11 1/4"	3"
802-Y03-35	35	70	03"	14 1/2"	4 1/2"	22 1/2"	19"	22 1/2"	1 1/2"	11 1/2"	3"
802-Y03-50	50	100	03"	14 1/2"	5 1/4"	31 3/4"	19 3/4"	22 1/2"	1 1/2"	11 1/2"	3"
LOW TYPE											
803-Y03-20	20	40	03"	7"	3 1/2"	39 1/2"	10 1/2"	21 7/16"	1 1/2"	4 1/2"	2-1/2"
803-Y03-35	35	70	03"	7"	4 3/4"	52 1/4"	11 3/4"	27 5/16"	1 1/2"	4"	3"
803-Y03-50	50	100	03"	10"	5 15/16"	50 1/4"	15 15/16"	27 5/16"	1 1/2"	7"	3"
802-T02-04	4	8	02"	6 7/8"	2 3/4"	12 3/8"	9 5/8"	12 3/8"	1 1/2"	4 7/8"	2"
802-T02-07	7	14	02"	7 3/4"	3 1/4"	13 3/4"	11"	13 3/4"	1 1/2"	5 3/4"	2"
802-T02-10	10	20	02"	8 3/4"	3 5/8"	15 1/8"	12 3/8"	15 1/8"	1 1/2"	6 1/4"	2-1/2"
802-T02-15	15	30	02"	11 1/4"	3 1/2"	17 1/2"	14 3/4"	17 1/2"	1 1/2"	8 3/4"	2-1/2"
802-T03-20	20	40	03"	12 3/4"	4"	19 1/2"	16 3/4"	19 1/2"	1 1/2"	9 3/4"	3"
802-T03-25	25	50	03"	14 1/4"	4 1/8"	21 1/8"	18 3/8"	21 1/8"	1 1/2"	11 1/4"	3"
802-T03-35	35	70	03"	14 1/2"	4 1/2"	22 1/2"	19"	22 1/2"	1 1/2"	11 1/2"	3"
802-T03-50	50	100	03"	14 1/2"	5 1/4"	31 3/4"	19 3/4"	22 1/2"	1 1/2"	11 1/2v	3"
LOW TYPE											
803-T03-20	20	40	03"	7"	3 1/2"	39 1/2"	10 1/2"	21 7/16"	1 1/2"	4 1/2"	2-1/2"
803-T03-35	35	70	03"	7"	4 3/4"	52 1/4"	11 3/4"	27 5/16"	1 1/2"	4"	3"
803-T03-50	50	100	03"	10"	5 15/16"	50 1/4"	15 15/16"	27 5/16"	1 1/2"	7"	3"

NOTE: Dimensional data subject to manufacturing tolerances and change without notice.



Built by:
JAY R. SMITH MFG. CO.
DIVISION OF SMITH INDUSTRIES, INC.



SERIES 802-803

SMP 1013

6/06

INTERCEPTORS

800 Series

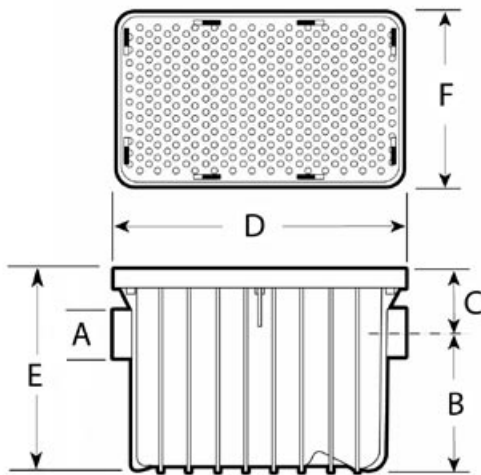
Polypropylene Grease Interceptors, Series 811

TAG _____

Product Description: Recommended for removing, then retaining fat, oil, and grease from wastewater in kitchen and restaurant areas where food is prepared. The 811 series is injection molded in engineered thermoplastics; it will not corrode, chip or peel; even under the most severe conditions. The tank is injection molded in one-piece eliminating seams that could be potential areas of leakage. Removable baffles combined with a smooth interior surface make cleaning quick and easy. This polypropylene GI consists of a reinforced cover with securing latches, removable inlet and outlet baffles, a diffuser baffle, a one-piece tank, a no-hub inlet and outlet, and a PVC flow control assembly with air intake tee and integral cleanout.

Features and Benefits:



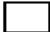


- Injection molded in Polypropylene, will not chip, rust or corrode
- Light weight facilitates transportation, handling, and installation
- Can support 440 pounds of pedestrian and light duty traffic load and can withstand temperatures of 220° F
- Uses a neoprene gasket and eight quick connection latches to provide a positive airtight seal and easy access for cleaning
- Sizing: 15, 20, 25, 35 and 50 G.P.M. flow rate
- PDI-G101 and IAPMO Listed, File No. 4022



Series 811 15, 20 & 25 G.P.M.



Series 811 35 & 50 G.P.M.

Figure Number	Material Type	GPM Flow Rate	Grease Cap LBS	A	B	C	D (Length)	E (Height)	F (Width)	Connection Type
 811-Y03-15	Polypropylene	15	30	3"	12 1/8"	4 3/16"	23 5/8"	16 5/16"	17 1/2"	No-Hub
 811-Y03-20	Polypropylene	20	40	3"	12 1/8"	4 3/16"	23 5/8"	16 5/16"	17 1/2"	No-Hub
 811-Y03-25	Polypropylene	25	50	3"	12 1/8"	4 3/16"	23 5/8"	16 5/16"	17 1/2"	No-Hub
 811-Y03-35	Polypropylene	35	70	3"	12 1/2"	5"	31"	17 1/2"	23 1/2"	No-Hub
 811-Y03-50	Polypropylene	50	100	3"	18 1/4"	5"	31"	23 1/4"	23 1/2"	No-Hub

NOTE: Dimensional data is subject to manufacturing tolerances and change without notice.

INTERCEPTORS

800 Series

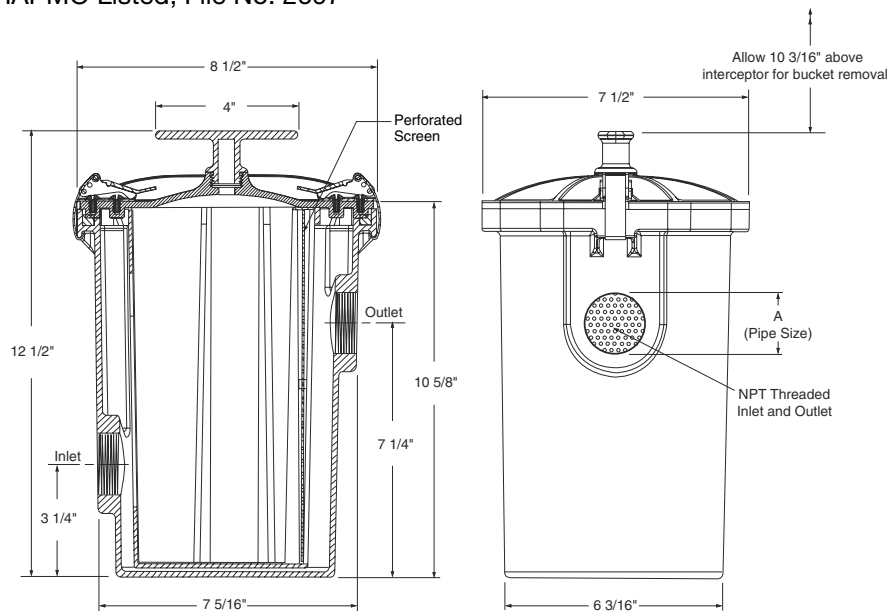
TAG _____

Small Capacity ABS Floor Mounted Solids Interceptor, Series 871

Product Description: Designed for dental offices or similar establishments to collect solids such as metal chips, plaster and stones before entering the drain line. This solid interceptor is small enough to mount directly under a sink to recover solids before they enter the drain line and cause stoppage. This unit is cleaned by removing cover and lifting strainer and screen assembly vertically out of the body.

Features and Benefits:

- Prevents line stoppage
- Intercepts precious metals, metal chips, plaster, stones as well as other harmful debris
- Mounts directly under a sink
- Ideal for a dental office, jeweler, hospitals, veterinarian or similar enterprise
- Furnished with all white ABS body, gasket cover with stainless steel latch and a removable sediment bucket with perforated screen (3/32" in diameter)
- IAPMO Listed, File No. 2697



Series 871

Series Number	Pipe Size
<input type="checkbox"/> 871-T0150	1-1/2"
<input type="checkbox"/> 871-T02	2"

NOTE: Dimensional data is subject to manufacturing tolerances and change without notice.



Built by:
JAY R. SMITH MFG. CO.
DIVISION OF SMITH INDUSTRIES, INC.



SERIES 871

SPM 1013

11/05

INTERCEPTORS

TAG _____

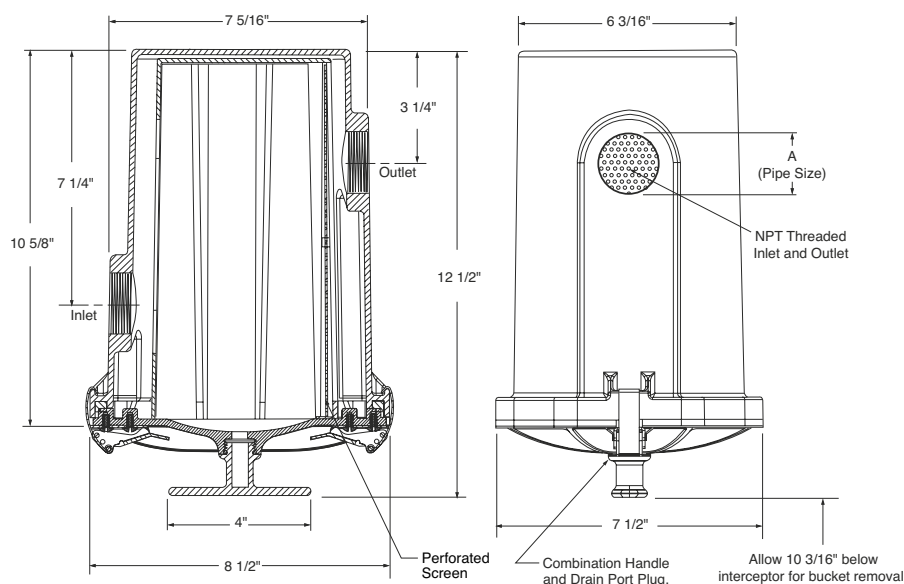
800 Series

Compact ABS Suspended Solids Interceptor, Series 873

Product Description: Designed for use in place of a regular “P” trap. This unit is ideal for dental offices or similar establishments to collect solids such as metal chips, plaster and stones before entering the drain line. This solid interceptor is compact enough to be mounted directly under a fixture. The unit is cleaned and inspected by removing bottom sediment strainer plate and dropping the entire assembly out of the body.

Features and Benefits:

- Prevents line stoppage
- Intercepts precious metals, metal chips, plaster, stones as well as other harmful debris
- Mounts directly under a fixture
- Ideal for a dental office, jeweler, hospitals, veterinarian or similar enterprise
- Furnished with all white ABS body, gasket cover with stainless steel latch and a removable sediment bucket with perforated screen (3/32” in diameter)
- IAPMO Listed, File No. 2697



Series 873

Series Number	Pipe Size
873-T0150	1-1/2"
873-T02	2"

NOTE: Dimensional data is subject to manufacturing tolerances and change without notice.



Built by:
JAY R. SMITH MFG. CO.
DIVISION OF SMITH INDUSTRIES, INC.



SERIES 873

SPM 1013

11/05